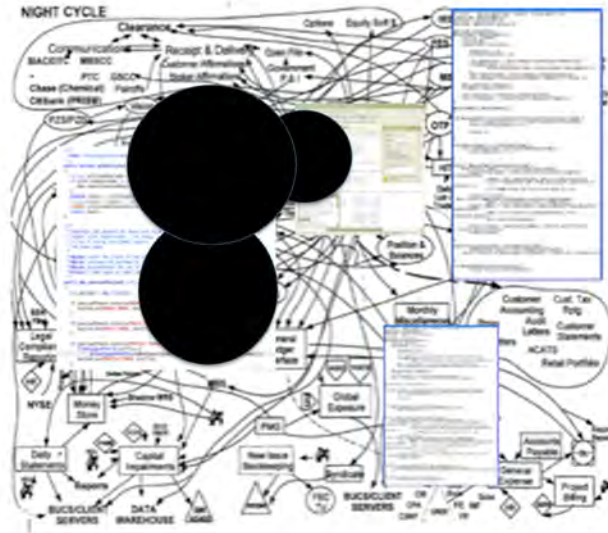
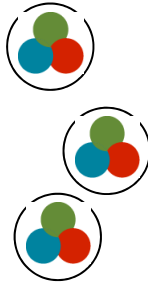


Three Scrum teams doing work



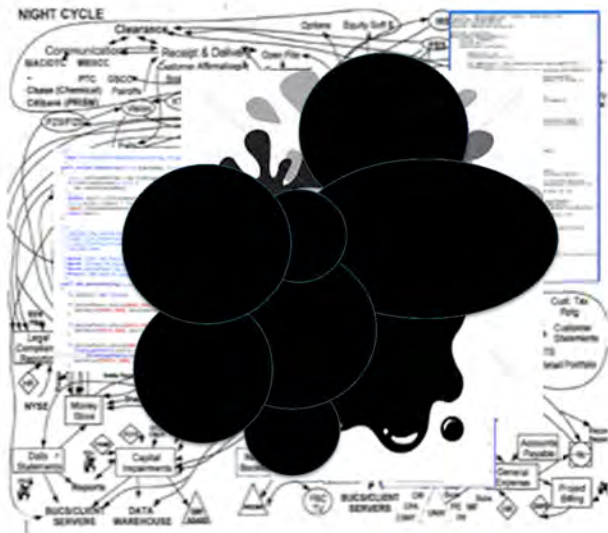
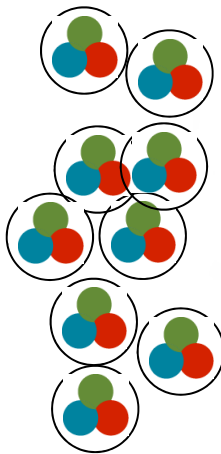
Product Backlog

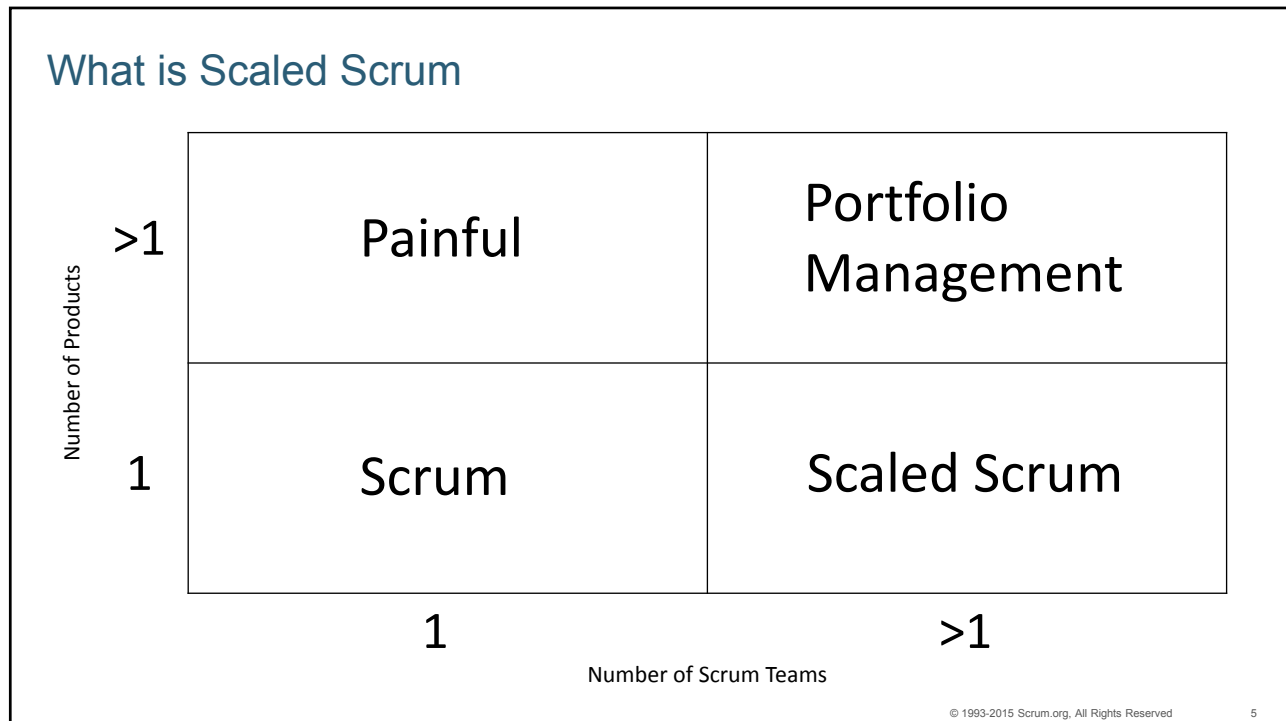


Nine Scrum teams doing work



Product Backlog

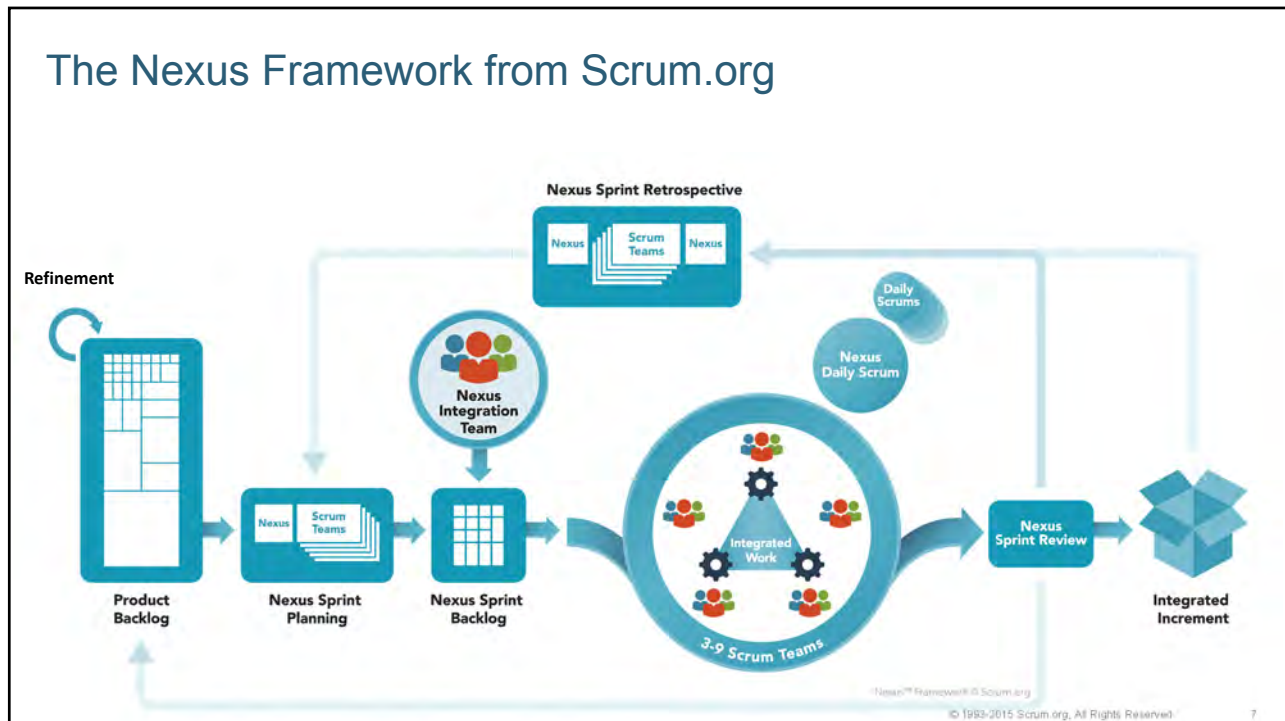




Organizations want to scale Scrum

- Great results with small initiatives of one to three teams
- Desire to gain similar benefits from larger initiatives
- Looking for a straightforward approach that builds on their current knowledge and skills

© 1993-2015 Scrum.org, All Rights Reserved 6



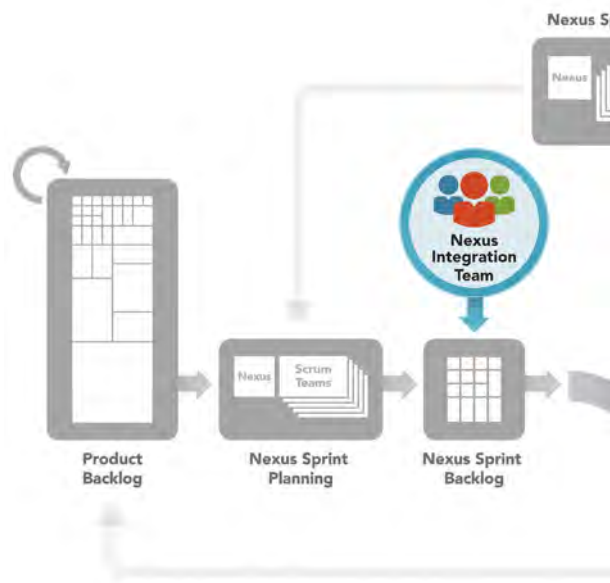
Nexus Roles, Events and Artifacts

Roles	Events	Artifacts
Development Teams	The Sprint	Product Backlog
Nexus Integration Team*	Nexus Sprint Planning*	Nexus Sprint Backlog*
Product Owner	Sprint Planning	Sprint Backlog
Scrum Master	Nexus Daily Scrum*	Integrated Increment
	Daily Scrum	
	Nexus Sprint Review*	
	Sprint Retrospective	
	Nexus Sprint Retrospective*	
	Refinement	

*Nexus specific

The Nexus Integration Team

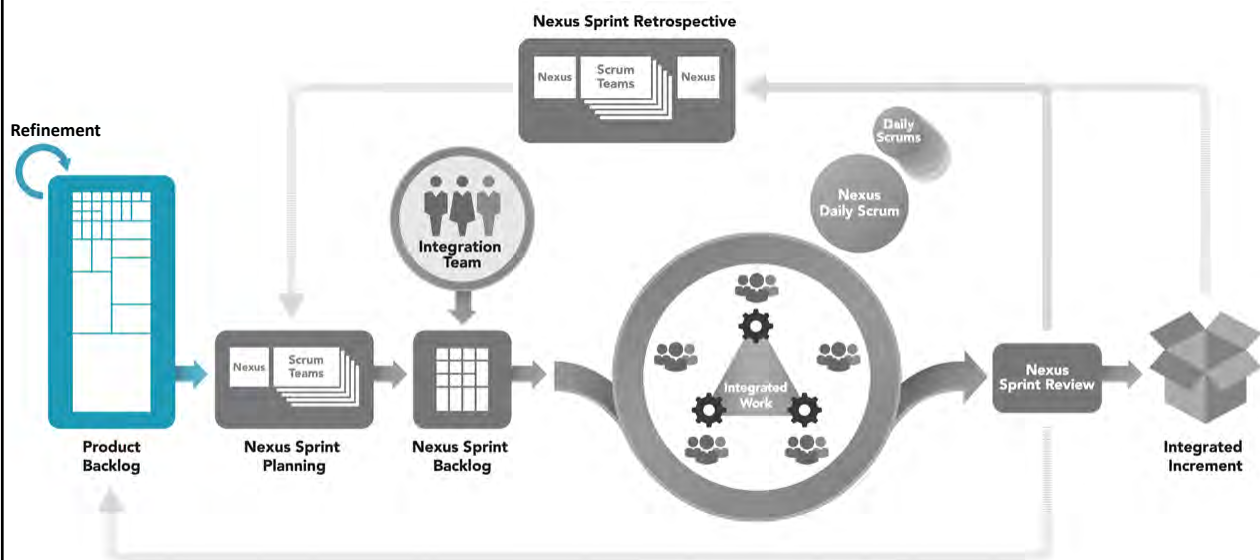
- The Nexus Integration Team is a Scrum Team.
 - Accountable for overall Nexus
- Members may be full or part time.
 - **Membership in the Nexus Integration Team takes precedence**
- Composition may change between Sprints.



© 1993-2015 Scrum.org, All Rights Reserved

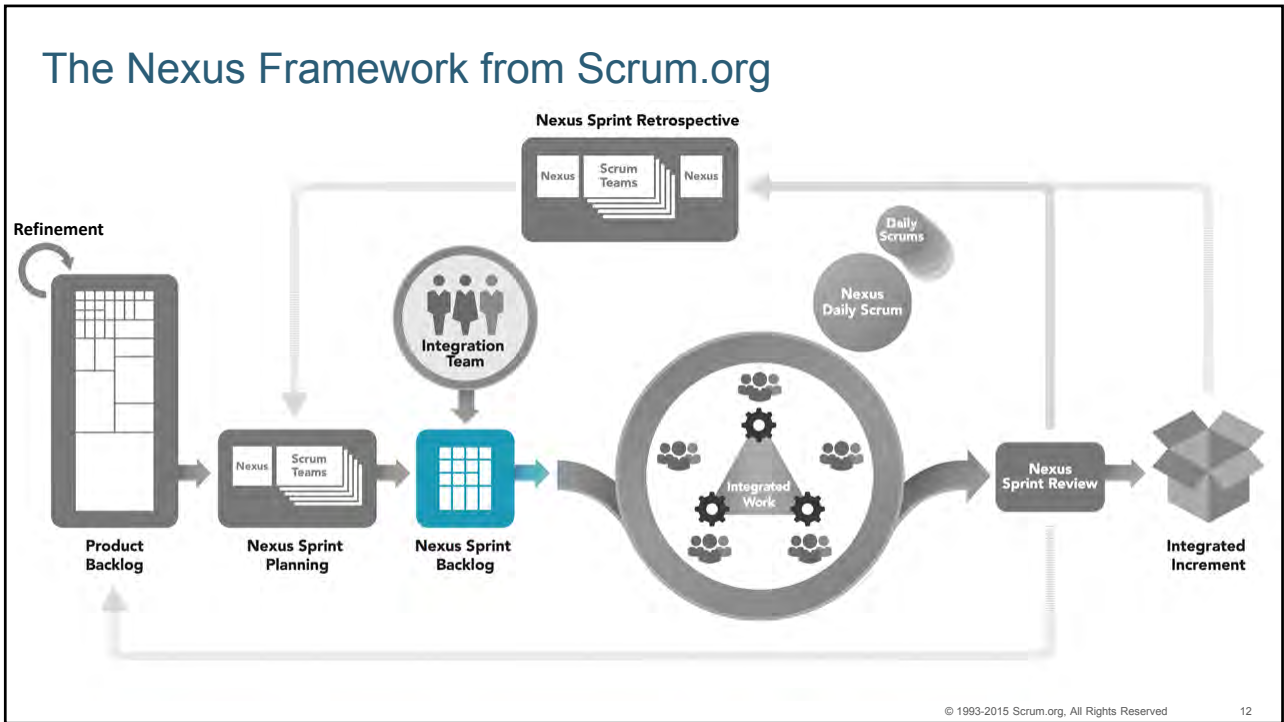
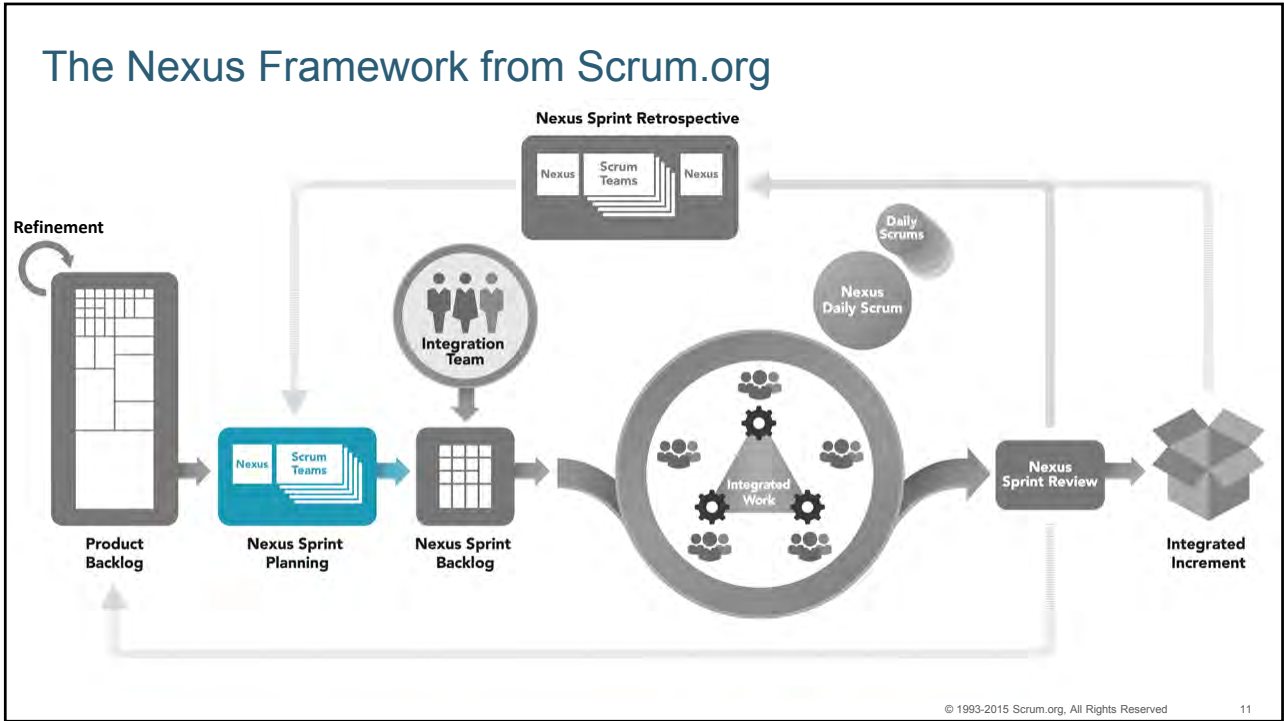
9

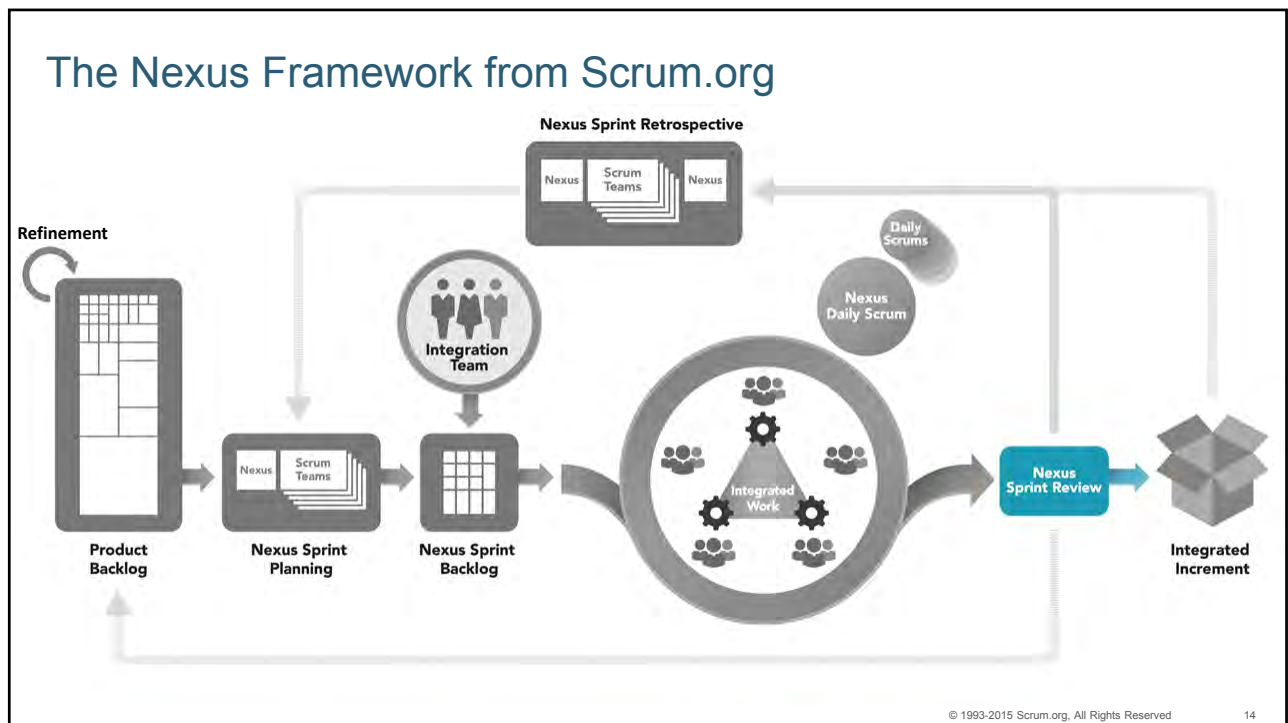
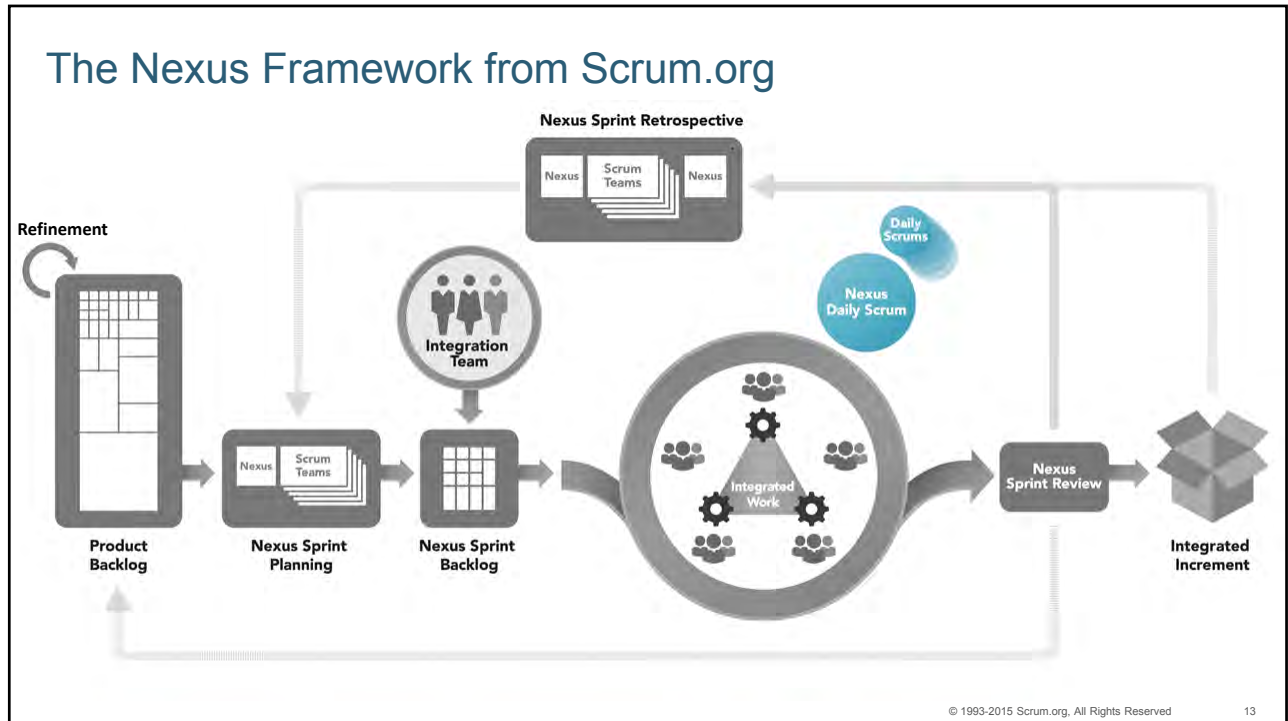
The Nexus Framework from Scrum.org

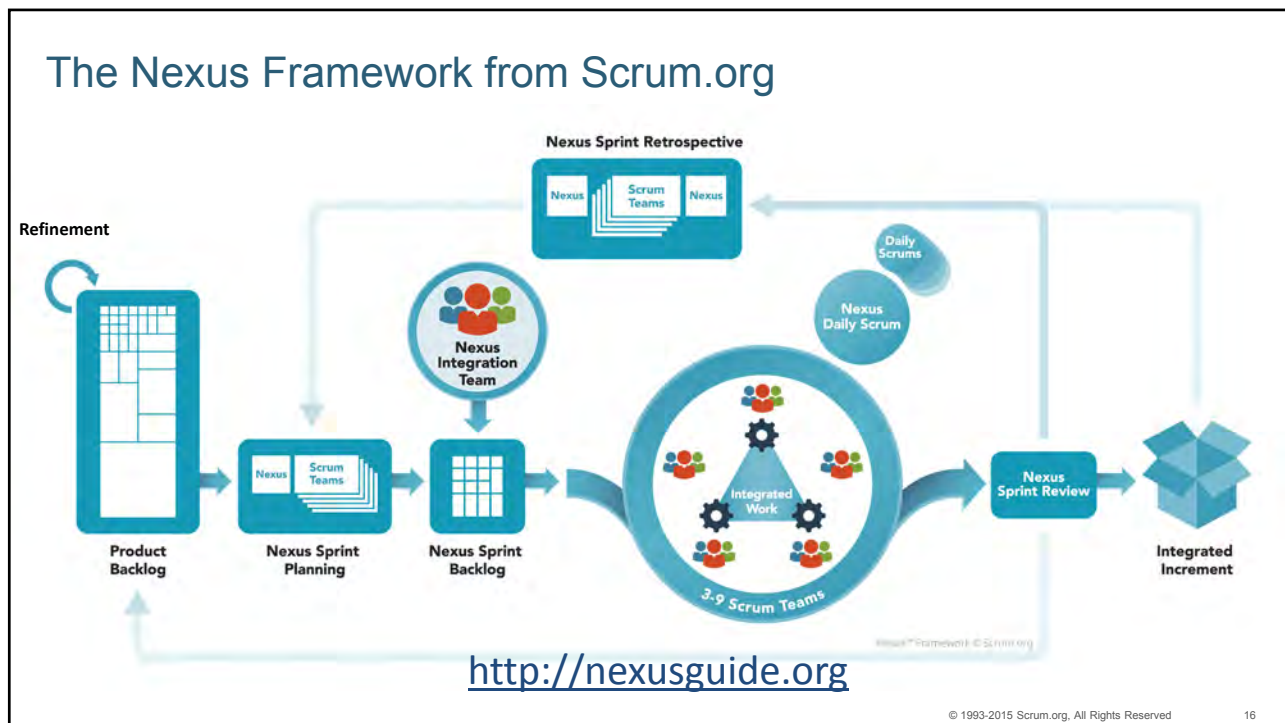
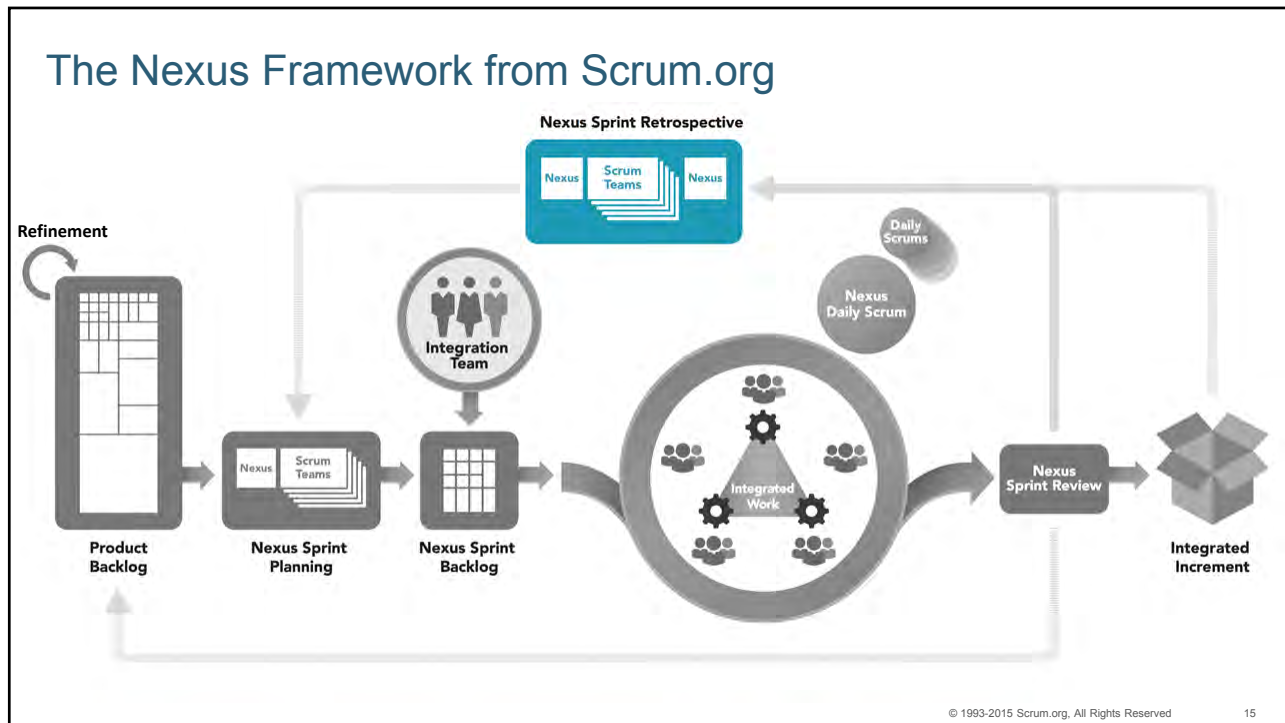


© 1993-2015 Scrum.org, All Rights Reserved

10



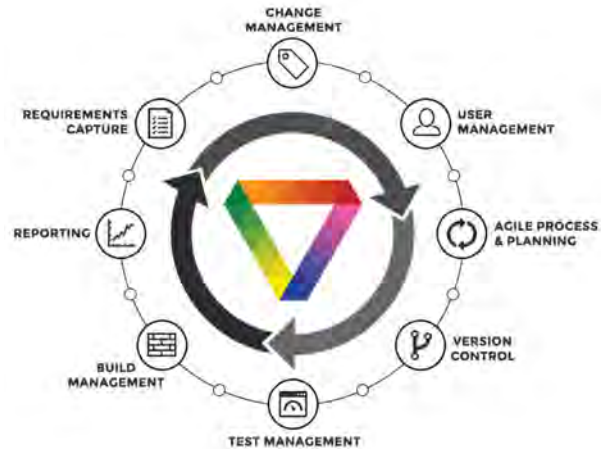




Practices and tools to scale (Nexus workshop)



- 40 Practices
 - Story mapping
 - Cross-team refinement
 - Continuous integration
 - Continuous build
 - Sprint backlog as TDD
 - ...
- ALM tooling



"Put all your eggs in one basket and then watch that basket."

– Mark Twain



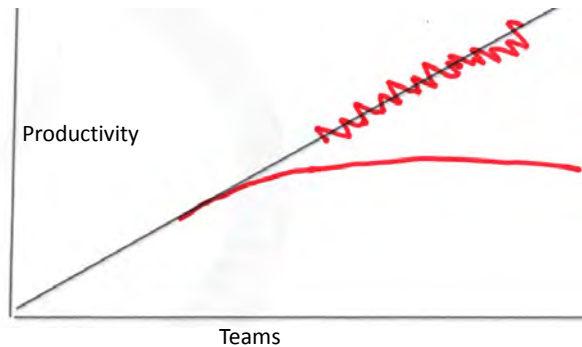
Managing the Nexus

Scaled Professional Scrum

Descaling – integration is too difficult, too much overhead



- Reduce the overall pace by reducing the number of teams to a more sustainable number;
- Improve use of practices and tools; and,
- Clean up and integrate the current software so it can be built upon in future Sprints.



© 1993-2015 Scrum.org, All Rights Reserved

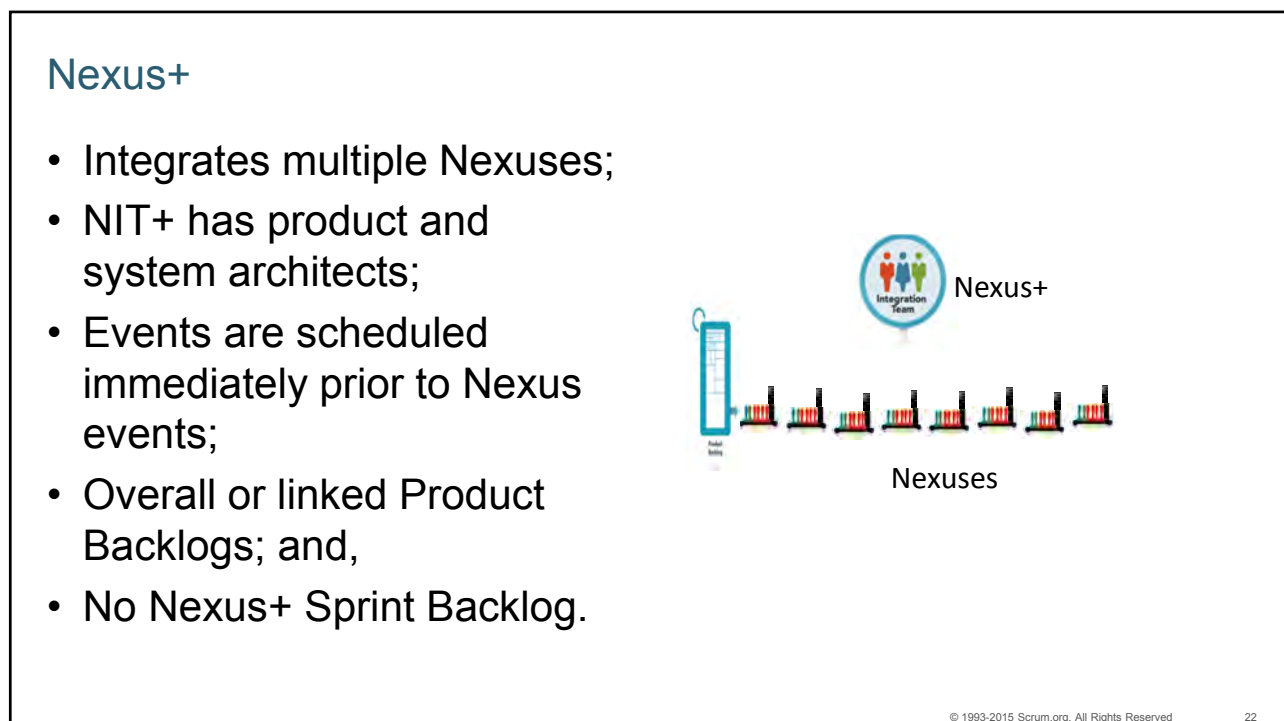
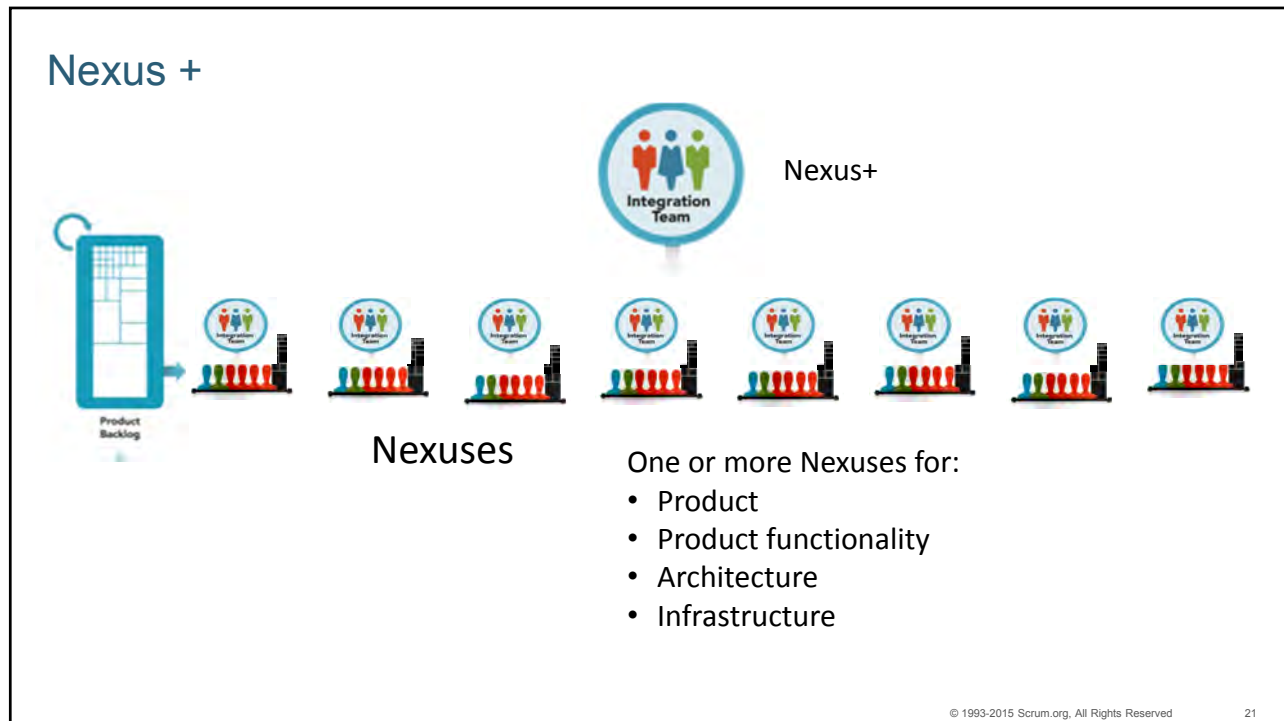
19

The Challenge of Large Scale Development

- We have found that the Nexus starts to fray and create confusion at around 9 teams.
 - We have experienced this across a range of companies and industries.
- Dependencies and integration issues are magnified and can create chaos.
- The engineering environment and architecture are then employed to standardize work and remove dependencies.
- **There is no guaranteed recipe at this scale – every project is unique.**

© 1993-2015 Scrum.org, All Rights Reserved

20



Next Steps

- Scaling Workshops - <http://bit.ly/1JJW9KF>
- Nexus Guide - <http://bit.ly/1i6zjHs>
- Nexus Assessments - <http://bit.ly/1M6olcg>

